



## vSEC:CMS K-Series

*In need of a management system for a smaller smart card project?*

*Want a smart card tool that is easy to use, efficient and cost efficient?*

*-Then vSEC:CMS K-Series is exactly what you need!*

### Smart Card Management

A smart card is a device that can be used for many purposes; the most important purpose for the enterprise security market is as an identification token using PKI digital certificates. For professional smart card use cases, especially when the smart cards are used as identification tokens, the smart cards must be managed by a smart card management system during the smart card lifecycle.



Figure 1: The smart card lifecycle

Personalization tasks include setting PIN codes, setting policies (PIN or fingerprint), loading certificates and setting management keys. Management tasks include unblocking PIN codes, setting new PIN codes, renewing and issuing new certificates. Revocation is generally the end of the smart card lifecycle, but it could also mean that the card can be personalized again. vSEC:CMS K-Series handles all the smart card lifecycle tasks.

### Operational Modes of vSEC:CMS K-Series

vSEC:CMS K-Series is the smart card management system that grows as your smart card project grows. First, it is the expert's tool that can be used free of charge at the early stages of an organization investigating smart card deployment, then it is *Tool mode*, with all major smart card management operations provided, such as:

- Administration key change
- PIN and BIO policy management
- PIN change
- Online & Offline PIN unblock
- Detailed Smartcard Information
- Advanced certificate management

When your project is ready to deploy smart cards, you easily upgrade to a professional –*Secure System Mode* of vSEC:CMS K-Series. The professional version provides high security levels by using hardware to protect the security providing encryption (the master keys), and two-factor access control. Also, full application traceability is provided with all activities captured in a secure repository.

When the smart card project gets even larger there are several documented migration paths to larger smart card management systems, such as the vSEC:CMS T-Series from Versatile Security, and also card management systems from other vendors.

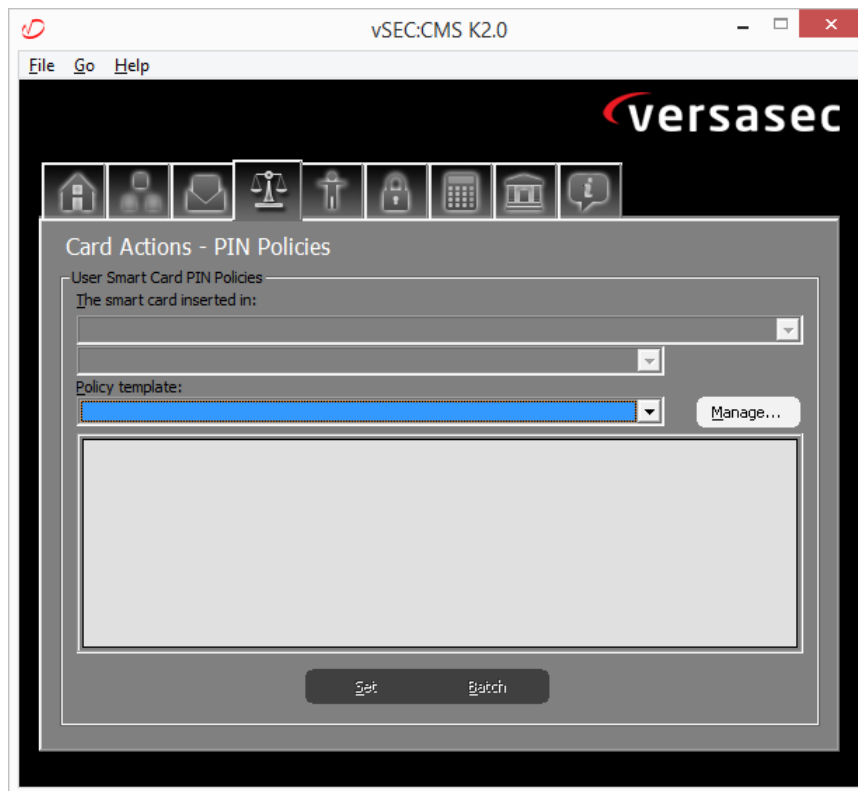


Figure 2: The vSEC:CMS K-Series Application

## Technical Specifications

### Operating Systems

- MS Windows 7, 8, 2008 and 2012

### Security Feature

- Secure key storage
- Admin key diversification from Hardware protected Master key
- Access by two factor authentication
- Encrypted smart card repository
- Secure backup

### Smart Card Features

- Batch processing
- Online and offline PIN unblock
- Smart card PIN and fingerprint policy manager
- Graphical PIN policy validation
- Admin key management
- Certificate/key management
- Detailed smart card information

### Supported Smart Cards

- Microsoft minidriver enabled smart cards
- Tested with:
  - Gemalto IDPrime .NET 510/5500/Bio
  - Gemalto SEG/SG
  - Gemalto IDPrime PIV
  - Gemalto IDPrime MD 3810/830/840/3840
  - ACS ACOS5-64/CryptoMate64
  - Avtor CryptoCard337
  - Athena IDProtect
  - Athena CNS
  - Morpho Ypsid S2
  - Oberthur Authentic
  - Oberthur IAS ECC
  - Oberthur ID-One PIV card
  - HID C200/C1150
  - Raak Technologies C2
  - Feitian ePass2003 Token
  - Safenet eToken PRO
  - Taglio C2